



Creative Kitchens At Curtis Lumber



Kitchen Planner

Showroom Locations

Ballston Spa

885 Route 67
Ballston Spa, NY 12020
518.885.5311

Queensbury

460 Big Bay Rd.
Queensbury, NY 12804
518.792.8601

Schuylerville

30 Saratoga St.
Schuylerville, NY 12871
518.695.3242

Hoosick

P.O. Box 98
Hoosick Falls, NY 12090
518.686.7391

Warrensburg

185 River St.
Warrensburg, NY 12885
518.623.3281

Granville

9511 Route 22
Granville, NY 12832
518.642.2855

East Greenbush

1657 Columbia Turnpike
Castleton, NY 12033
518.477.7503

Norwich

48 Hale St.
Norwich, NY 13815
607.337.9322

Plattsburgh

140 Tom Miller Rd.
Plattsburgh, NY 12901
518.561.2691

Ray Brook

1134 NYS Route 86
Ray Brook, NY 12977
518.891.2216

Burlington, VT

315 Pine St.
Burlington, VT 05401
802.863.3428

We Also Have Store Locations In....

Delmar

11 Grove St.
Delmar, NY 12054
518.439.9968

Schroon Lake

1314 Route 9
Schroon Lake, NY 12870
518.532.7404

Fort Plain

6236 Route 5S
Ft. Plain, NY 13339
518.993-5755

Perth

3883 State Highway 30N
Amsterdam, NY 12010
518.883.9663

Delhi

46631 State Highway 10
Delhi, NY 13753
607.746.2386

Greene

1294 State Highway 12
Greene, NY 13778
607.656.4123

Hamilton

15 Eaton St.
Hamilton, NY 13346
315.824.2233

New Berlin

3106 County Highway 18
New Berlin, NY 13411
607.847.6101

Sherburne

1056 County Route 23
Sherburne, NY 13460
607.674.2533

Waterville

961 State Highway 12
Waterville, NY 13480
315.841.4111

Williston, VT

349 LeRoy Rd.
Williston, VT 05495
802.863.3428



Kitchen planning isn't rocket science, but it does take some homework before you start.

1. Get a general idea of how the space will be used.
2. Examine the traffic flow in and out of the space.
3. Make special note of architectural accents or barriers.
4. Design your kitchen or bath to be family-friendly.
5. Avoid hazards in design or cooking choices for small children.
6. Plan with electrical and water lines in mind.
7. Most of all, work within the space to achieve a pleasing mix of cabinets and open areas.

With a little forethought, you can design the perfect kitchen for almost any size space!

Getting Started

Determine the look you want to achieve.

Whether it is Traditional or Contemporary or something in between, Curtis Lumber has more than enough style and color choices to please even the most discriminating tastes.

Determine Your Budget

National Kitchen and Bath Association typical budget for a kitchen remodel:

- 48% Cabinets
- 16% Labor
- 13% Countertops
- 8% Appliances
- 6% Interior Design
- 4% Plumbing Fixtures
- 4% Flooring
- 1% Lighting

(source National Kitchen & Bath web site "Typical Budget Breakdown")

Select a cabinet range and style to fit your budget and decor

From economical stock cabinets to semi-custom and even a full-custom option, Curtis Lumber has cabinet styles and choices for every style and budget.

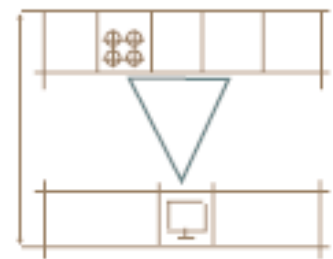
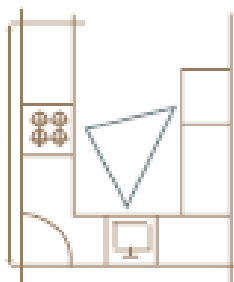
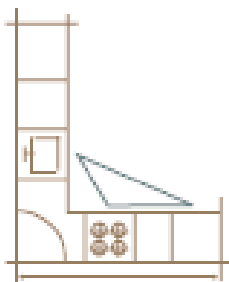
Determine fixtures and appliances

A wide range of kitchen appliances can be incorporated into the design as accents or to blend with the overall look using customized matching panels. Determine where and how you want your appliances and fixtures in your new space.

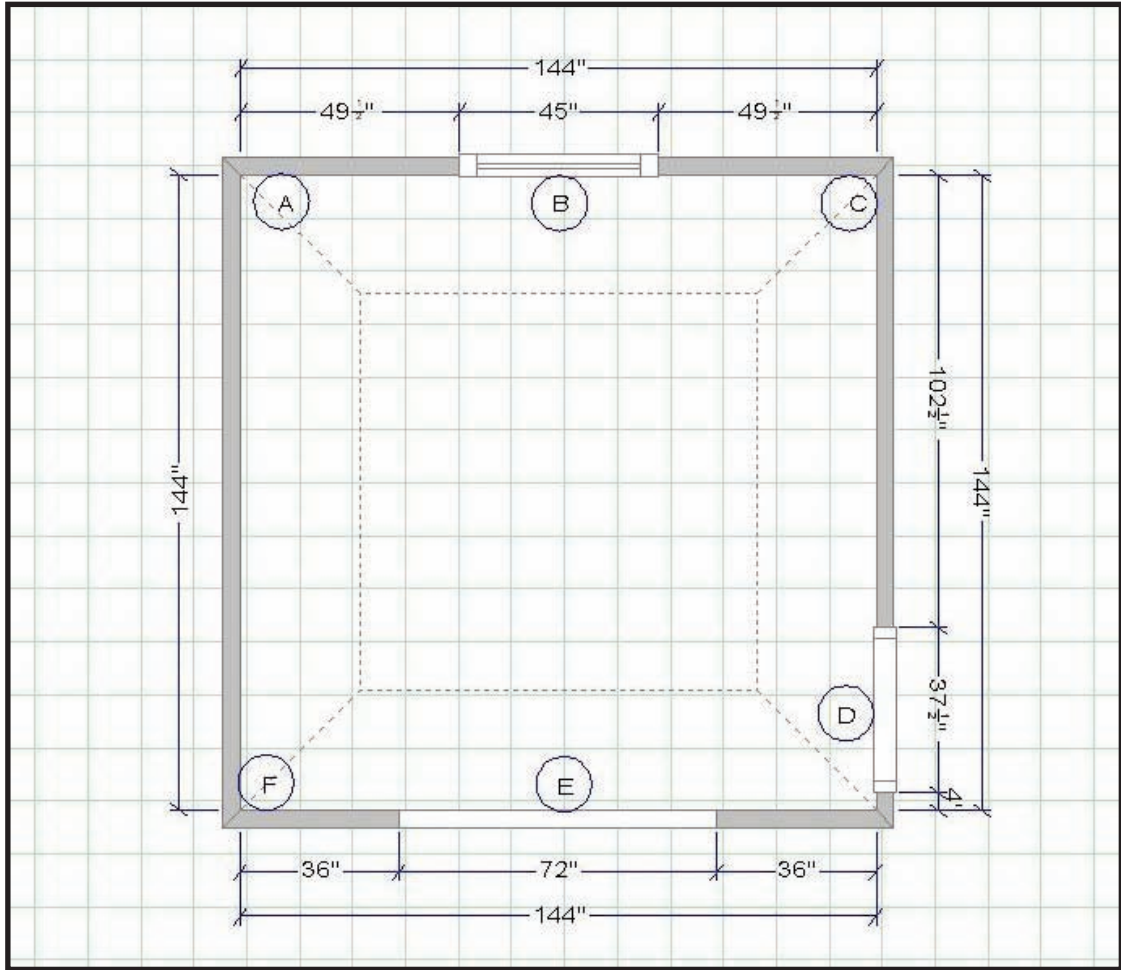
For kitchens, select a work triangle and traffic flow

For the greatest efficiency, kitchen workspace is generally laid out in what kitchen designers call a "work triangle." Examine these sample triangles and create a work triangle for your space

- **No one length of the work triangle should be longer than 8'-9'**
- **Your triangle's perimeter should be no longer than 26'**
- **The work triangle should not be in the middle of traffic flow**



Kitchen Measuring Guide



Measuring your kitchen is easy. By following these simple instructions and using the graph paper provided you can help speed along the design process for your new kitchen. Simply follow these instructions:

1. Start in one corner (A) and measure to the edge of the first door or window and mark down this measurement.
2. Measure the door or window (B) from one outside edge of the trim to the other outside edge.
3. Now, measure from the outside of the trim to the corner (C) or next door or window.
4. Repeat Step 1 through Step 3 until you have measured the entire room.

Please Note: Double check your measurements by measuring the entire wall length from wall to wall and comparing it to your individual measurements taken in Steps 1-3.

Example:
 (A) to (C): Entire wall measures 144"
 From (A) to (B) = 49-1/2". (B) = 45". (B) to (C) = 49-1/2"
 Totals: 49-1/2" + 45" + 49-1/2" = 144"

- Obstacles to note:**
- Ceiling Heights
 - Appliance Dimensions
 - Windows
 - Alcoves
 - Exterior Walls
 - Soffits
 - Doors
 - Steps
 - Ledges

- Utilities to note:**
- Receptacles
 - Lights
 - Water Lines
 - Radiators
 - Switches
 - Gas Lines
 - Heat Vents



Ask your Curtis Lumber Kitchen and Bath Associate for help or advice.

Your Curtis Lumber specialist has the experience and professional training to help you plan and answer any questions you may have about kitchen design and installation.

Kitchen Floorplan

